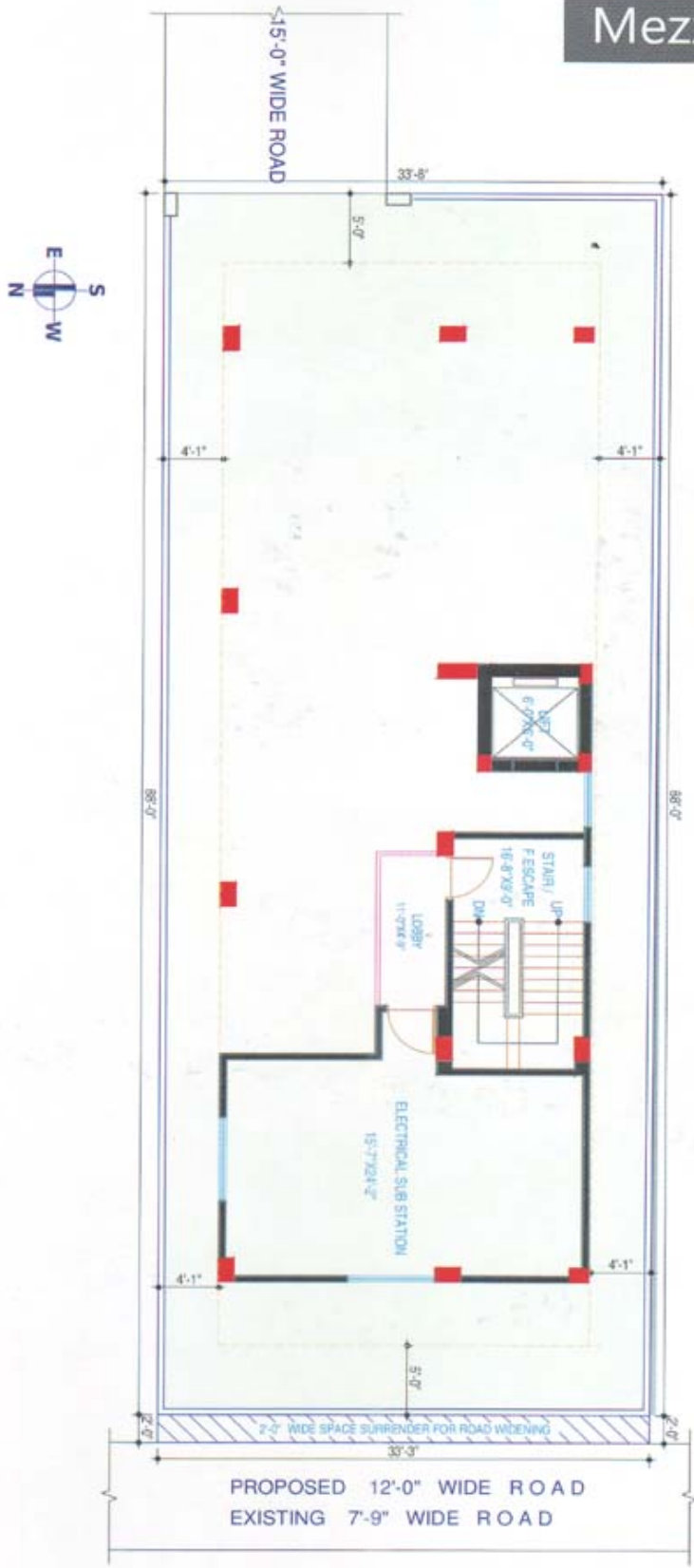


oriental
S.R villa
at Zigatola



Mezzanine floor plan



Floor Plan



2nd TO 7th FLOOR PLAN

 SCALE: 3/32" = 1'-0"



A .1100 sft , B .1100 sft



Specifications

Door:

- Main Door: Malaysian decorative wooden door with Door Chain, Check Viewer, Mortice Lock, Apartment Number etc.
- Internal door: Veneered flash door, All doors will have Mortice locks.
- Bathroom door: Local made plastic door / Orel Std.
- Door Frame: Front and Internal frame of 6" x 2.5" Garjan/ Mehogany wood.

Windows:

Aluminum sliding with 5 mm glass and safety grill of M.S section.

Varnish:

Main doors, Internal doors and false ceiling doors with French polish.

Floor:

Floor finished will be of 24" x 24" mirror polish tiles (RAK, Akij or equivalent).
Stair floor finished will be Tiles.

Plumbing:

Water supply will be of PPR pipes and sewerage, vent pipes, rain water, waste water will be of PVC pipes. all pipes concealed in ducts.

Paint:

All Interior wall will be of plastic paint and ceiling of distemper paint.
All exterior wall paint of weather coating to protect from heat and dampness.

Bathroom features:

Local sanitary wares as per company's choice (RAK, AKIJ or equivalent).
In wall-glazed tiles of RAK, AKIJ or equivalent made up to ceiling.
In Floor-12"X12" Nonskid tiles of RAK, AKIJ or equivalent made.
Best quality chrome plated fittings.
Porcelain soap case and best quality standard size mirror.

Kitchen Features:

Attractive designed platform with tiles workshop. Colored glazed wall tiles up to 7' height and floor tiles of RAK, AKIJ or equivalent.
Suitably located double burner gas outlet.
One stainless counter top steel sink.
Separate plug points and suitably located exhaust fan.

Electrical Features:

All electric wiring, phone lines will be concealed. Concealed dish antenna line in master bed.
One telephone connection point in master bed.
One intercom connection with guard post from each apartment.
Suitably located electrical distribution board with control devices.
Best quality local made electrical, telephone cables and foreign made.
TV/ dish antenna cables to be used in concealed wiring.
Air conditioning point in master bed and living room.
Best quality foreign made switches, sockets, TV and Telephone Jacks etc to be used.
Separate electrical meter for each apartment.

Gas:

All apartments will have separate gas subject to government approval or LPG cylinder connections

Common Facilities:

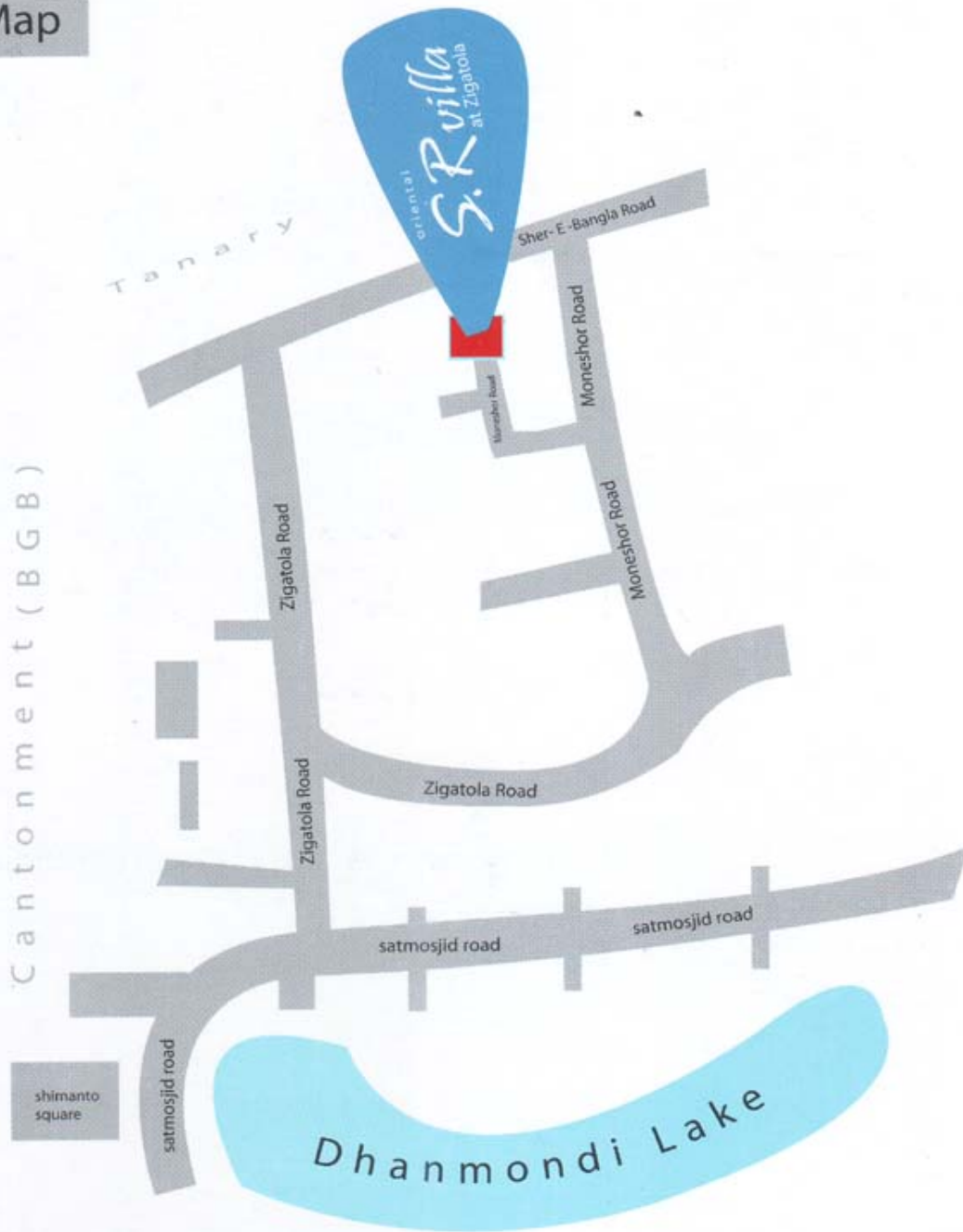
Ground floor is reserved for car parking.
Spacious entrance for drive way through decorative gate with security provisions.
Suitable space for standby generator room, electric main distribution room, pump house and toilet room, lift lobby, guard post will be provided in the ground floor.
Underground water reservoir with water lifting pump connected with roof top water tank to hold 2.5 days of supply.
Attractive designed main staircase with easy to climb steps with SS handle rest.
Superior quality lifts from internationally reputed manufacturers with stoppage in each floor.
Rooftop with protective parapet wall paralleled with green belt. Provision for drying clothes.
A stand by generator with adequate capacity to operate two emergency lights and one fan in each apartment, Lift, Pump, Lobby, Intercom Service, Stair, Car Parking, Reception Area, Security Room, Main Gate etc.
Glazed tiles in lift face.
Fire fighting equivalents.

Optional Features:

Additional fittings and fixtures, alternation of major configuring design other than prescribed by the developer as per choice of allottee may be done at cost incurred after approval of the company.



Location Map



ORIENTAL
Real Estate Limited

Corporate Office : House 15, Road 4, Dhanmondi, Dhaka -1205
P: +880-2-58611178, 58611179, 58611180, 9665806
E: info@orientalgroupbd.com, www.orientalgroupbd.com